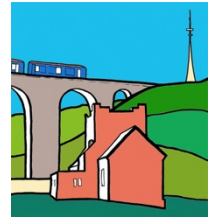

Trinity Workshops

Men's Shed | Women's Shed | Share Shed



New Year Letter to Members 2024/25

Dear All

As we approach the New Year, I thought that you might welcome an update on our progress and on plans for the church. The conveyancing process has now begun and hopefully, we will become the new owners sometime in the spring.

The work to put a new roof on the tower is now complete and the builders have started on the repair of the roof over the organ space. Uncovering the layers of botched repairs was interesting, but there was no avoiding the fact that the roof timbers were completely rotten and that it would all need to be replaced. Glen and Reece will return to work in January and the job will probably take another 2 weeks to finish. However, once this is complete, a good part of the church will be weatherproof and we should be able to reinstate the electricity supply.

This will leave the remaining flats roofs over the vestry and kitchen to repair, which means that our next major task will be to raise the funds needed. To this end, towards the end of January, we will be launching a crowdfunding campaign. We know from social media and face to face meetings that there is considerable community support for our plans, and hopefully this will be reflected in the money that we manage to raise.

I'm sure that you will agree that this is an exciting opportunity and with a bit of luck and a following wind, we should be able to start work on the interior very soon. By this time next year, I'm sure that the space will look less like a damp and neglected church, and much more like a community workshop.

We should also recognise that we would not have achieved any of this without the immense support that we enjoy within our membership. The New Year is a great time to reflect on what we have achieved, and perhaps on what we will achieve in the coming year. Our membership continues to grow, and this is reassuring for our sustainability as we progress into the future. New blood and fresh ideas are so important in this process.

This year we took the decision to increase our subscription fee to £240 per year and as you know, this will start on the 1st of January 2025. Consequently, if you pay by Direct Debit, you will need to make the necessary adjustment. This is the first time that subscriptions have gone up since 2107, and the change will help to keep the Shed going and support the move to the Holy Trinity Church.

If you have any questions, or ideas that you think will help, then please get in touch. Her's to a fantastic 2025 - let's make it our best yet.

Congratulations everyone.
Happy New Year.

Robert